



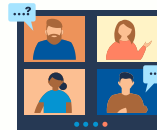
# Member Benefits

Become a Professional Childcare member today for just  
**\$55**



## Annual INA Exams and Assessments

The *Basic Skills Assessment* shows the world you have the knowledge needed to care for children. The *Credential Exam* raises the bar by making you an INA Credentialed Nanny or NCS and giving you use of the Credential Logo. These tests are now updated annually and INA Members can take them for FREE each year. Members can stay up-to-date on their credentials.



## Professional Webinars

Members can be a part of our monthly Webinars for FREE. This is a \$25 value for every webinar they attend. Recent topics include sleep support, back to school homework help, support when leaving families, teen years, perfectionism, and much more.



## Career Resources

The INA has a growing resource library which includes FAQ sheets and templates such as Work Agreement and Nanny and Payroll Taxes. INA resources include a Job Board and recruiting events with only INA Member Agencies involved but open to all childcare providers.



## Conference Endowment

The INA annually holds a 3-day event that will invigorate the attendees' career. Not only do INA Members receive the best price possible (\$100+ discount) members are eligible to apply for the Conference Endowment. This gives at least 2 full registrations to 2 INA Members in order to recognize our members for their dedication to the industry.



## Industry Awards

Members are eligible for nomination as INA Nanny of the Year™ and applications for the Service Award Pin. Members can show their pride in the years in the industry through the Service Award Pin. Applications for this honor are now FREE. Members are also eligible to accept a nomination to the INA Nanny of the Year™ Award.



## Networking Connections

Members have access to our INA Member Facebook group where they can find other Professional Nannies and NCS to network with and learn from. This is a highly professional group where members can get and give great advice.